

PIAA

HIGH PERFORMANCE WIPERS

GENERAL INSTALLATION INSTRUCTIONS

PREPARATION

1. Park vehicle in a safe location, turn off engine and set parking brake.
2. Remove old wiper blades.



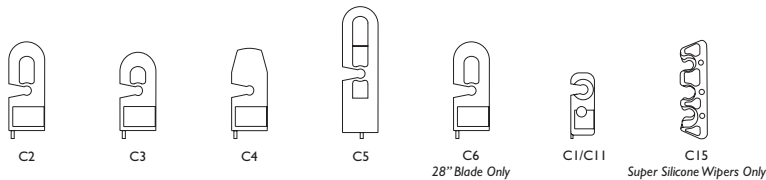
CAUTION

WIPER BLADE ARMS ARE SPRING LOADED, MAKE SURE THEY DO NOT IMPACT THE WINDSHIELD, THIS MAY CAUSE DAMAGE.

3. Wash windshield thoroughly with soap and water or a glass cleaner.
4. **For Super Silicone Wiper Blades Only;** apply the windshield treatment solution. Remove the windshield treatment towel from its packet. Wipe the entire windshield with windshield treatment towel. Let the windshield treatment solution dry on the windshield for 10 minutes, then wipe windshield with a clean, dry or slightly damp towel.

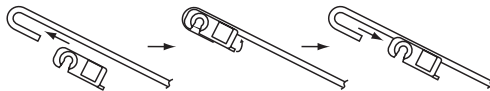
INSTALLATION

Adapters

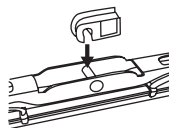


HOOK STYLE WIPER ARMS

1. Choose the correct wiper blade adapter from the adapter pack (see application guide).
2. Test fit the adapter into the wiper arm to check fit. The correct adapter will "snap" into place.



3. Once proper adapter is identified, press the adapter into the PIAA wiper blade. The adapter will "snap" into place on the pin in the center of the primary stay.

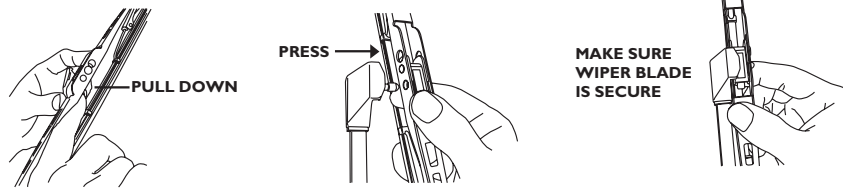


4. Install PIAA wiper blade onto wiper arm.



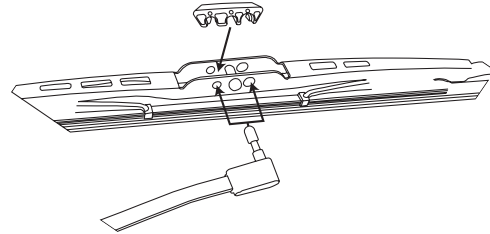
3/16" SIDE-LOCK, PIN-STYLE WIPER ARMS

1. For 3/16" side lock pin style wiper systems. Adapter C11 only.



3/16" AND 1/4" SIDE-LOCK, PIN-STYLE WIPER ARMS

1. For 3/16" and 1/4" side-lock, pin-style wiper systems. Adapter C15 only.

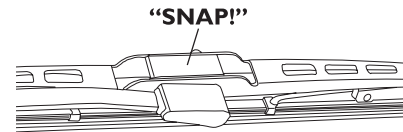


2. Insert wiper arm pin through the correct sized hole in the wiper frame.

3. With wiper arm pin inserted all the way through the frame, snap adapter C15 over center pin and wiper arm pin. Notice that adapter C15 has a larger and smaller receptacle side. Match the larger and smaller sides of the adapter with the larger and smaller holes in the frame.

4. Make sure adapter C15 "snaps" into place and that the wiper blade is securely fastened to the wiper arm. Also make sure the wiper blade is free to swivel on the wiper arm pin.

Adapter C15 may not work with some 3/16" wiper arms. If so, use adapter C11.



CARE AND MAINTENANCE

A. Replacement Periods

- a. Super Silicone Wiper Blades – Replace yearly or when damaged.

- ### B. Keeping the windshield and wiper blades clean will prolong the life of your wiper blades.